

Every day, care.

At Whirlpool, each appliance gives the proper care your family needs because we believe that every act of care, whether big or small, plays a huge role in turning ordinary moments into unforgettable memories.

**Whirlpool®**  
Every day, care.®



# U.S. HEAVY-DUTY WASHER & DRYER



## Heavy-Duty Design

The outer tub is made of galvanized steel, a hardwearing metal finish, while the inner tub is designed with stainless steel or ceramic to prevent rust, chipping, and corrosion even after years of use.



## Deep Water Wash

To ensure that all stains are removed, this option provides a deeper water fill for cases when the clothes are not completely submerged in water.



## Flex Vane Agitator

A single agitator is placed in the center of the tub to rub against clothes and further break down dirt and stains.



## Dual Action Agitator

The movement rotates the clothes from the top to the bottom of the agitator for a more thorough wash. This ensures that every corner of the clothes is clean and free from stains.



## MAT20MN

15 kg IEC Rated Capacity  
Commercial U.S.  
Top Load Washer

- 7 Wash Cycles
- Deep Water Wash System
- Traditional Flex Vane Agitator
- Wash Temperature Selection
- Powerful Drive System
- Mechanical Control Panel
- Heavy-duty Cabinet
- Premium Porcelain – Enamel Top
- Child Lid Lock
- Color: White
- Dimension (h:w:d)  
108 : 68.58 : 66.04 cm.



**MAYTAG**  
COMMERCIAL LAUNDRY

## MDG20MN

15 kg IEC Rated Capacity  
Commercial U.S. Gas Dryer

- 3 Dry Cycles
- **TurboVent Technology**
- Extra Large 7.4 cu. ft. capacity
- Dry Temperature Selection
- Mechanical Control Panel
- Heavy-duty Cabinet
- Reversible Door
- Color: White
- Dimension (h:w:d)  
104 : 68.58 : 74.3 cm.

## 4GWTW3000FW

15 kg IEC Rated Capacity  
U.S. Heavy Duty Washer

- 11 Wash Cycles
- Quick Wash Cycle
- Whites Cycle
- Delicate Cycle
- 6th Sense Technology
- Dual Action Agitator
- Fabcon Dispenser
- Liquid Bleach Dispenser
- Mechanical Control Panel
- Deep Water Wash System
- Soil Level Selection
- Wash Temperature Selection
- Load Size Selection
- Extra Rinse Selection
- Galvanized Heavy-duty Body
- White Porcelain Tub
- Child Lid Lock
- Color: White
- Dimension (h:w:d)  
109.22 : 69.85 : 68.58 cm



## 4KWED4815FW Electric 4GWGD4815FW Gas

15 kg IEC Rated Capacity  
U.S. Heavy Duty Dryer

- 8 Dry Cycles
- Timed Dry Cycle
- Automatic Dry Cycle
- Energy Efficient Cycle
- Wrinkle Shield Cycle
- Fluff Air Cycle
- Temperature Function
- Electronic Control Panel
- Galvanized Heavy-duty Body
- Color: White
- Dimension (h:w:d)  
110.2 : 73.6 : 70.5 cm



## AccuDry™ Sensing System

Overexposure to harsh heat of the dryer can cause clothes to shrink. The AccuDry Sensing System helps thoroughly dry your clothes while maintaining its quality, therefore, increasing garment lifespan.



## Wide-Opening Hamper Door

A wide-opening hamper door allows easy access to your clothes as you dry them, while the drop-down door provides added convenience by giving you room to fold clothes.

# TOP LOAD FULLY AUTOMATIC WASHER



## 6<sup>th</sup> Sense™ Technology

The washer senses the laundry load and adjusts the amount of detergent, water, and time accordingly which in turn leads to energy savings – bringing you the best results in every cycle.



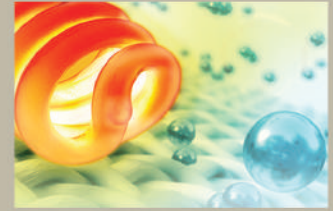
## Inverter Direct Drive Motor

The motor is directly attached to the drum providing stability, durability, and efficiency during wash cycles. It also offers excellent sound management for peaceful laundry sessions at home.



## Antibacterial Stainless Steel Drum

The stainless steel design increases the washer's resistance against bacteria during laundry cycles.



## Hot Wash Technology

The Hot Wash Cycle heats water for up to 60°C to remove bacteria, viruses, dirt, and odor that have accumulated on the clothes throughout the day.



## InverterPlus Technology

To achieve maximum energy savings, the InverterPlus Technology lets every wash cycle automatically adjust its settings based on the internal load of the washer.



## Auto-Dosing System

For optimum fabric care, the washer disperses the perfect amount of laundry detergent at the right time based on the laundry load – helping you take out the hassle in every wash cycle.

- 8 Wash Cycles (WVWD, WVIID)
- 10 Wash Cycles (WVMD)
- 6th Sense Smart Start Technology
- Soft Touch Control Panel
- Direct Drive Inverter Motor
- Auto-Dosing System (WVMD)
- Hot Wash Function (WVMD, WVIID)
- Hot Spring Rinse Function (WVIID)
- Start-Deley Function
- Child Lock Control Panel
- Drum Clean
- Drum Sterilization (WVIID)
- Antibacterial Stainless Steel Drum
- Soft-Closing Glass Lid
- Low Water Pressure Requirement
- Color: Quicksand Gold
- Input Power:

- 420W (WVIID)
- 400W (WVWD)
- 300W (WVMD)
- Heater Power:
- 1600W (WVMD)
- 1500W (WVIID)
- Dimension (h:w:d)
- 95.5 : 54 : 56.8 cm (WVWD850/950/1050, WVIID1058)
- 98.5 : 57 : 59.3 cm (WVIID1158)
- 100 : 60 : 63.2 cm (WVMD1208)

## WVWD850BKG

8.5 kg Inverter Top Load Washer



## WVWD950BKG

9.5 kg Inverter Top Load Washer



## WVWD1050BKG

10.5 kg Inverter Top Load Washer



## WVIID1058BKG

10.5 kg Inverter Top Load Washer + Hot Wash Technology



## WVIID1158BKG

11.5 kg Inverter Top Load Washer + Hot Wash Technology



## WVMD1208BHG

12 kg Inverter Top Load Washer + Hot Wash Technology

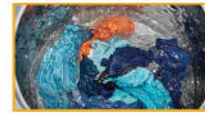


# TOP LOAD FULLY AUTOMATIC WASHER



## ZPF Technology

Compared to other fully-automatic washers that require at least 10 psi to function, the Zero Pressure Fill Technology fills the tub 50% faster even when the water pressure reaches as low as 2 psi.



## Hard Water Wash

Hard Water Wash keeps the clothes free from damages caused by mineral deposits from hard water. It allows the washer to deliver 30% better wash performance and detergent action for cleaner clothes.

- 12 Wash Cycles
- 6th Sense Technology
- Stainwash Technology
- ZPF Technology\*
- Agipeller\*
- Variator\*\*
- Detergent Dispenser
- Digital Control Panel
- Water Level Selection
- Hot Water Selection
- Express Wash Function
- Delay Wash Function
- Up to 740rpm
- Hard Water Wash\*

- Stainless Steel Tub
- Galvanized Body
- Control Panel Child Lock
- Rat-Proof Base Cover
- Color: Graphite
- Input Power: 360W
- Heater Power: 1450W
- Dimension (h:w:d) LHB802: 96.5 : 54 : 56 cm
- Dimension (h:w:d) LHB1202: 103.5 : 62 : 66.5 cm
- Dimension (h:w:d) LHB1402: 109 : 62 : 67 cm

## LHB802

8 kg Top Load Fully Auto Washer



## LHB1202

12 kg Top Load Fully Auto Washer



## LHB1402

14 kg Top Load Fully Auto Washer



\*LHB802  
\*\*LHB1202 & LHB1402



## 6th Sense™ Smart Start Technology

By pressing the power button for three seconds, the washer detects the internal load and chooses the appropriate wash cycle – helping you get the best results every time.



## Energy Saver Cycle

This cycle promotes energy efficiency by consuming 50% less electricity and 30% less water compared to a normal wash cycle.



## LFP580GR

5.8 kg Top Load Fully Auto Washer

- 4 Wash Cycles
- Shark-fin Pulsator
- Fabcon Dispenser
- Digital Control Panel
- Process Selection
- Water Level Selection
- Delay Wash Function
- Up to 850rpm
- Stainless Steel Tub
- Galvanized Body
- Control Panel Child Lock
- Rat-Proof Base Cover
- Color: Gray
- Input Power: 300W
- Dimension (h:w:d) 90 : 50 : 51.5 cm



## LSP680GR

6.8 kg Top Load Fully Auto Washer

- 6 Wash Cycles
- Energy Saver Cycle
- Shark-fin Pulsator
- Fabcon Dispenser
- Detergent Dispenser
- Digital Control Panel
- Process Selection
- Water Level Selection
- Delay Wash Function
- Up to 850rpm
- Stainless Steel Tub
- Galvanized Body
- Control Panel Child Lock
- Rat-Proof Base Cover
- Color: Gray
- Input Power: 300W
- Dimension (h:w:d) 90 : 50 : 53.5 cm



## LSP780GP

7.8 kg Top Load Fully Auto Washer

- 9 Wash Cycles
- Energy Saver Cycle
- 6th Sense Smart Start Technology
- Shark-fin Pulsator
- Fabcon Dispenser
- Detergent Dispenser
- Digital Control Panel
- Process Selection
- Water Level Selection
- Delay Wash Function
- Up to 850rpm
- Stainless Steel Tub
- Galvanized Body
- Control Panel Child Lock
- Rat-Proof Base Cover
- Color: Graphite
- Input Power: 330W
- Dimension (h:w:d) 90.7 : 52 : 54.7 cm



## LSP1080GP

10.8 kg Top Load Fully Auto Washer

- 9 Wash Cycles
- Energy Saver Cycle
- 6th Sense Smart Start Technology
- Shark-fin Pulsator
- Fabcon Dispenser
- Detergent Dispenser
- Digital Control Panel
- Process Selection
- Water Level Selection
- Delay Wash Function
- Up to 850rpm
- Stainless Steel Tub
- Galvanized Body
- Control Panel Child Lock
- Rat-Proof Base Cover
- Color: Graphite
- Input Power: 400W
- Dimension (h:w:d) 95 : 57 : 59.2 cm

# FRONT LOAD WASHER



## 6th Sense™ Technology

The washer senses the laundry load and adjusts the amount of detergent, water, and time accordingly which in turn leads to energy savings – bringing you the best results in every cycle.



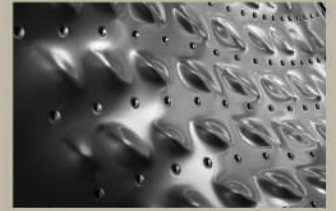
## InverterPlus™ Technology

To achieve maximum energy savings, the InverterPlus Technology lets every wash cycle automatically adjust its settings based on the internal load of the washer.



## Hybrid Steam Oxcare

Combines steam and oxygen with other suitable programs for de-wrinkling and extra sanitation of clothes. (for 11 kg model)



## Stainless Steel Tub

The stainless steel design increases the washer's durability and allows it to withstand hard water and high spin speeds during laundry sessions.



**12 YEAR**  
WARRANTY  
ON INVERTER MOTOR

- 15 Wash Cycles
- 6th Sense Technology
- InverterPlus Technology
- Detergent Dispenser
- Fabcon Dispenser
- Digital Control Panel
- Hot Water Selection
- Spin Speed Selection
- Delay Wash Function
- Up to 1200rpm
- Stainless Steel Tub
- Child Lock – Control Panel & Door
- Input Power: 300W
- Heater Power: 1800W



## Hot Wash Technology

The Hot Wash Cycle heats water for up to 80°C to remove bacteria, viruses, dirt, and odor that have accumulated on the clothes throughout the day.



## Seamless Tub

The seamless design reduces unnecessary friction between clothes and prevents fibers from getting caught during wash and dry cycles.



## 3D Sensor

The 3D Sensor is an intelligent stabilizer system with shock absorption to help reduce noise for peaceful laundry sessions any time of the day.



## Drum Clean

The Drum Clean Cycle removes dirt residue on the inner and outer tub of the washer. It sanitizes the washer to prevent odor from clinging on to your clothes.



## WFRB752BHW

### 7.5 kg Inverter Front Load Washer

- Color: White
- Dimension (h:w:d)  
85 : 60 : 58 cm



## WFRB852BHG

### 8.5 kg Inverter Front Load Washer

- Color: Graphite
- Dimension (h:w:d)  
85 : 60 : 58 cm



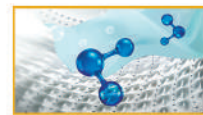
**12 YEAR**  
WARRANTY  
ON INVERTER MOTOR

- 10 Wash Cycles
- 6th Sense Technology
- Zen Inverter Technology
- Drum Sterilization
- Digital Control Panel
- Spin Speed Selection
- Stainwash Cycle
- Sanitize Wash Cycle
- 1400 rpm
- Antibacterial Drawer and Bellow
- Power: 1750W



## Sanitize Wash Cycle

Heats water for up to 90°C and allows you to add laundry sanitizer for guaranteed removal of bacteria and viruses on clothes.



## Oxcare Technology

Uses the natural power of oxygen in removing bacteria and viruses on clothes and non-apparel items.

(for 11 kg model)



## FWEB9503BS

### 9.5 kg Inverter Front Load Washer

- Dimension (h:w:d)  
85 : 60 : 60 cm

## FWEB10503BS

### 10.5 kg Inverter Front Load Washer

- Dimension (h:w:d)  
85 : 60 : 63.5 cm



Color: Silver



## FWMD11003BG

### 11 kg Inverter Front Load Washer

- Zen Direct Drive Motor
- Oxcare Technology
- Hybrid Steam Oxcare
- Interactive Control Panel
- Dimension (h:w:d)  
84.5 x 59.5 x 60.5 cm



Color: Grey

# FRONT LOAD WASHER & DRYER



## Zen Inverter Technology

The inverter motor quietly operates and intuitively adjusts the drum rotation to ensure maximum performance and efficiency.



- Zen Inverter Technology
- 10 Wash Cycles
- 6th Sense Technology
- Sanitize Wash Cycle
- Hot Air Refresh Cycle
- Wash & Dry 60' Cycle
- Antibacterial Compartment & Below
- Digital Control Panel
- Spin Speed Selection
- 1400 rpm

WWEB8503BW:

- Color: White
- Dimension (h:w:d)  
85 : 60 : 60 cm

WWEB11703BG:

- Color: Grey
- Dimension (h:w:d)  
85 : 60 : 63.5 cm



**WWEB8503BW**  
8 kg Wash / 5 kg Dry  
Inverter Combo Washer-Dryer



**WWEB11703BG**  
11 kg Wash / 7 kg Dry  
Inverter Combo Washer-Dryer



## Hot Air Refresh

Freshens up clothes and non-apparel items such as pillows and stuffed toys by using 90°C hot air.



## Antibacterial Compartment & Below

Built with an antimicrobial agent to prevent bacterial growth even with long-term usage.



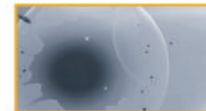
## Wash & Dry 60'

Completes a full wash and dry cycle for small laundry loads in just 60 minutes.



## Shoe Dryer Rack

The rack is placed inside the dryer to provide extra care for your shoes, preventing it from getting damaged during the drying cycle.



## Anti-Bacteria Cycle

Besides removing excess moisture, the hot air from the dryer is used to disinfect and prevent bacterial growth on freshly-laundered clothes.

## Space-Saving Design

Our front load washers can be stacked with the compatible tumble dryer making them perfect for small spaces. The stackable washer and dryer takes only half the space giving you more room to move around and do other chores in the laundry area.



**AWD72AWP**  
7.2 kg Front Load Electric Dryer

- 13 Dry Cycles
- Anti-Bacteria Cycle
- Digital Control Panel
- Quick Function
- Half Load Function
- Delay Start Function
- Child Lock – Control Panel and Door Lock
- Color: White
- Input Power: 2200W
- Dimension (h:w:d)  
85 : 59.5 : 55.5 cm

Can be stacked with WFRB752BHW



**AWD80AGP**  
8 kg Front Load Electric Dryer

- 13 Dry Cycles
- Anti-Bacteria Cycle
- Digital Control Panel
- Quick Function
- Half Load Function
- Delay Start Function
- Shoe Dryer Rack
- Child Lock – Control Panel and Door Lock
- Color: Graphite
- Input Power: 2200W
- Dimension (h:w:d)  
85 : 59.5 : 55.5 cm

Can be stacked with WFRB1054BHG, WFRB954BHG, WFRB852BHG

# TWIN TUB WASHER



## Shockproof and Waterproof Control Panel

This feature protects the control panel and its components from getting damaged by water spills and shock throughout the washing and drying cycles.



## Rust-Proof Plastic Body

The body of the washer is made of rust-proof plastic so you are assured that it's durable and meant to last for many years.



## Double Wall Lining

The tub is designed with a double-wall lining for maximum durability and protection.



## 3D Lint Filter

This filter collects lint during the wash cycle to ensure that the clothes come out fresh and clean after every wash.



## 3D Scrub Technology

3D Scrub Pads remove even the toughest stains by rotating the clothes in an up-down motion.



## Hard Water Cycle

This cycle adjusts the wash program by providing better detergent action to keep clothes soft, fresh, and free from damages caused by mineral deposits from hard water.

- 5 Wash Cycles
- Hard Water Wash Cycle
- Pulsator
- 3D Scrubbers
- Shockproof & Waterproof Control Panel
- Wash Timer
- Spin Timer
- Up to 1400rpm
- Rust-Proof Plastic Body
- Rat-Proof Base
- 3D Lint Filter
- Graphite
- Roller Feet
- Input Power:  
350W (WTPC1100BJG)  
375W (WTAC1300BJG)
- Dimension (h:w:d)  
96.5 : 88.6 : 51.5 cm (WTPC1100BJG)  
102 : 94 : 56.7 cm (WTAC1300BJG)



**WTPC1100BJG**  
11.0 kg Twin Tub Washer



**WTAC1300BJG**  
13.0 kg Twin Tub Washer



## Pulsator

Creates water currents inside the tub so that clothes scrub against each other and remove stains.



## Air Dry Technology

Drives air inside the tub at a high speed to remove excess moisture on clothes. This keeps your laundry odor-free and reduces drying time.

- 2 Wash Cycles
- 3 Wash Cycles (LWT1020)
- Pulsator
- Wash Timer
- Spin Timer
- Air Dry (LWT1020)
- Up to 1550rpm
- Up to 1650rpm (LWT1020)
- Rust-Proof Plastic Body
- Rat-Proof Base
- Lint Filter
- Color: White  
Black Lid, White Body (LWT1020)
- Input Power:  
300W (LWT650)  
320W (LWT700)  
400W (LWT800 ; LWT1020)
- Dimension (h:w:d)  
83.7 : 75 : 42 cm (LWT650)  
88.9 : 76.2 : 44.4 cm (LWT700)  
94.6 : 78.7 : 44.4 cm (LWT800)  
94.6 : 79.3 : 46.9 cm (LWT1020)



**LWT650**  
6.5 kg Twin Tub Washer



**LWT700**  
7.0 kg Twin Tub Washer



**LWT800**  
8.0 kg Twin Tub Washer



**LWT1020**  
10.2 kg Twin Tub Washer

# MULTI-DOOR & SIDE-BY-SIDE REFRIGERATOR



## 6th Sense Technology

Smart sensors detect the refrigerator's internal load as well as the ambient temperature. This allows the refrigerator to give an optimal cooling performance for long-lasting food freshness.



## Zen Inverter Technology

This innovative technology minimizes noise levels and ensures uniform cooling inside the refrigerator with up to 60% less energy consumption.



## Flexi Freeze Technology

The Flexi Freeze compartment can be programmed into three temperatures (Soft, Mild, and Deep Freeze) to let you control the cooling level based on what food you need to store.



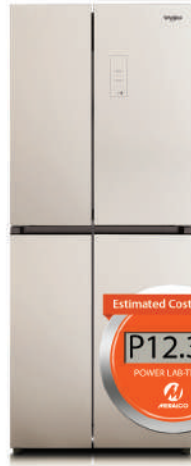
## Photosynthesis LED Light

The Photosynthesis LED Light imitates sunlight to let fruits and vegetables undergo photosynthesis for long-lasting freshness and nutrient preservation.



### 6WFD16NIKGG

16 cu.ft. Inverter French Door Refrigerator



### 6WM16NIHGG

16 cu.ft. Inverter Multi-Door Refrigerator



### 6WM24NIHAS

24 cu.ft. Inverter Multi-Door Refrigerator

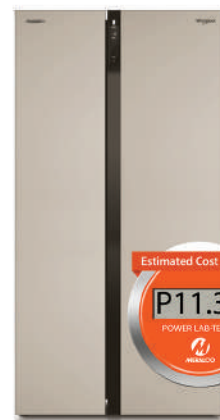
- Zen Inverter Technology
- 6th Sense Technology
- Smart Mode
- Quick Cooling Mode
- Quick Freezing Mode
- Flexi Freeze Mode (6WM24NIHAS)
- Smart Defrosting
- Flexi Freeze Compartment (6WM24NIHAS)
- Child Lock - Control Panel
- Antibacterial Filter
- Counter Depth Design
- Color: Stainless Steel (6WM24NIHAS), Glass Gold (6WM16NIHGG, 6WFD16NIKGG)
- Input Power: 255W (6WM24NIHAS), 180W (6WM16NIHGG, 6WFD16NIKGG)
- Dimension (h:w:d) 187.4 : 90.5 : 69 cm (6WM24NIHAS) 187.4 : 69.3 : 71.5 cm (6WM16NIHGG, 6WFD16NIKGG)



### 6WS21NIHGG

21 cu.ft. Inverter Side-by-Side Refrigerator

- Zen Inverter Technology
- 6th Sense Technology
- Smart Mode
- Quick Cooling Mode
- Quick Freezing Mode
- Photosynthesis LED Light
- Smart Defrosting
- Child Lock - Control Panel
- Anti-Bacterial Filter
- Counter Depth Design
- Color: Glass Gold
- Input Power: 200W
- Dimension (h:w:d) 180.2 : 91.5 : 72.7 cm



### 6WSP21NIHGG

21 cu.ft. Inverter Side-by-Side Refrigerator

- Zen Inverter Technology
- 6th Sense Technology
- Smart Mode
- Quick Cooling Mode
- Quick Freezing Mode
- Photosynthesis LED Light
- Smart Defrosting
- Child Lock - Control Panel
- Anti-Bacterial Filter
- Counter Depth Design
- Color: Gold
- Input Power: 225W
- Dimension (h:w:d) 180.2 : 91.5 : 72.7 cm



# TOP MOUNT REFRIGERATOR



## 6<sup>th</sup> Sense™ Technology

Smart sensors detect the refrigerator's internal load as well as the ambient temperature. This allows the refrigerator to give an optimal cooling performance for long-lasting food freshness.



## Microblock™ Technology

The antimicrobial material inside the crisper prevents growth of bacteria to guarantee food freshness for up to fifteen days.



## Deep Freeze Technology

A powerful fan increases the speed and circulation of cold air inside the refrigerator, resulting into 80% faster cooling and 70% quicker ice-making.



## Energy-efficient R600A Refrigerant

The eco-friendly R600A Refrigerant quickly absorbs heat inside the fridge, helping the refrigerator cool faster and function to its maximum capacity at the lowest cost.



- IntelliSense Inverter Technology
- Adaptive Intelligence Technology
- Convertible Freezer (5-in-1 Mode)
- Energy-efficient Embraco Compressor
- R600a Refrigerant
- Zeolite Technology
- Fresh Flow Air Tower with Flexi Vents
- Microblock Technology
- Active Deo
- Freshonizer
- Input Power: 180W
- Color: Mirror Dark Stainless Steel
- Dimension (h:w:d)  
172 : 57 : 67 cm (6WIN105UBS)  
168 : 62 : 67.5 cm (6WIN130UBS)



**6WIN105U BS**  
10.5 cu.ft. Inverter  
No-Frost Refrigerator

Estimated Cost Per Day  
**P6.35**  
POWER LAB-TESTED



**6WIN130U BS**  
13 cu.ft. Inverter  
No-Frost Refrigerator

Estimated Cost Per Day  
**P7.61**  
POWER LAB-TESTED



The combination of **Whirlpool's 6<sup>th</sup> Sense Technology** and **Inverter Technology** lets these refrigerators give superior energy savings like no other in the market.



## BETTER THAN INVERTER



**6WBI85 USS**  
8.5 cu.ft.  
No-Frost Refrigerator

Estimated Cost Per Day  
**P6.47**  
POWER LAB-TESTED

- 6<sup>th</sup> Sense Technology
- Tri-Sensor Advanced Technology
- Microblock Technology
- Deep Freeze Technology
- Energy-efficient R600a Refrigerant
- Air Tower Cooling FreshFlow with Flexi Vents
- Freshonizer
- Active Deo Filter
- Color: Stainless Steel
- Input Power: 125W
- Dimension (h:w:d)  
150 : 57 : 67 cm (6WBI85USS)  
159 : 57 : 67 cm (6WBI95USS)  
168 : 62 : 67.5 cm (6WBI120USS)  
164 : 70 : 72 cm (6WBI160USS)

Other models:

**6WBI95 USS** 9.5 cu.ft.  
Estimated Cost Per Day: P9.17

**6WBI120 USS** 12 cu.ft.  
Estimated Cost Per Day: P8.73

**6WBI160 USS** 16 cu.ft.  
Estimated Cost Per Day: P10.13

## UNBEATABLE ENERGY SAVINGS



**6WBN858 SV**  
8.5 cu.ft.  
No-Frost Refrigerator

Estimated Cost Per Day  
**P7.12**  
POWER LAB-TESTED

- 6<sup>th</sup> Sense Technology
- Microblock Technology
- Deep Freeze Technology
- Energy-efficient R600a Refrigerant
- Twin Cooling Gel
- Air Tower Cooling FreshFlow with Flexi Vents
- Freshonizer
- Active Deo Filter
- Color: Silver
- Input Power: 125W
- Dimension (h:w:d)  
150 : 57 : 67 cm (6WBN858SV)  
159 : 57 : 67 cm (6WBN958SV)

Other model:

**6WBN958 SV** 9.5 cu.ft.  
Estimated Cost Per Day: P8.54

# SOLID TOP CHEST FREEZER



## Dual Function Technology

For maximum flexibility, the temperature of the chest freezer can be adjusted so it can be used as either a chiller or freezer, depending on the food you will store.



## Inverter Technology

The inverter motor helps save up to 60% energy as it runs efficiently while providing high cooling performance at the same time.

### WHH07DC6

7 cu.ft. Inverter Solid Top Chest Freezer



### WHH11DC6

11 cu.ft. Inverter Solid Top Chest Freezer



### WHH14DC6

14 cu.ft. Inverter Solid Top Chest Freezer



- Inverter Technology
- R600A Refrigerant
- Dual Function Technology
- Electronic Control Panel
- Galvanized Interior
- LED Light
- Key Lock
- Input Power: 155W (7, 11 cu.ft.), 180W (14 cu.ft.)
- Color: White
- Net Dimension (h:w:d)
  - 84.5 : 90.5 : 54.5 cm (WHH07DC6)
  - 84.5 : 112 : 70 cm (WHH11DC6)
  - 84.5 : 130 : 70 cm (WHH14DC6)

# DISHWASHER



## Sanitize Function

This function cleans the dishware with hot water to get rid of excess oil and dirt as well as kill up to 99.99% of bacteria and viruses.



## PowerDry Technology

A convection fan brings in hot air to remove moisture on the dishware, helping you achieve outstanding drying results.

## SupremeClean™



### WCTD104PH

40 cm Countertop Dishwasher

- 6th Sense Technology
- 8 Wash Programs
- Flexible Washing Option
- Single Rack Washing Option
- Rinse Aid Indicator
- Start-Delay Function
- SaniRinse Function
- Energy Efficient
- 9-Liter Water Consumption
- Cutlery Basket
- Input Power: 1750W
- Color: White
- Dimension (h:w:d) 85 : 60 : 59 cm

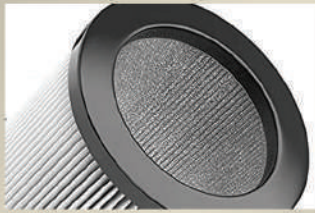


### WFC3C26

60 cm Freestanding Dishwasher

- 6th Sense Technology
- Power Dry Technology
- 7 Wash Programs
- Start-Delay Function
- Sanitize Function
- Energy Efficient
- 5-Liter Water Consumption
- Cutlery Basket
- Input Power: 850W
- Color: White
- Dimension (h:w:d) 43 : 41 : 40 cm

# SPLIT-TYPE AIR CONDITIONER



## HEPA Filter

This filter improves air quality by absorbing up to 99.97% of harmful particles along with bacteria and viruses in the air.



## InverterPlus™ Technology

This advanced technology allows the air conditioner to provide up to 60% energy savings while operating at its optimum for a comfortable stay at home.

### SAH09CIW / OD

1.0 HP Premium Inverter Split-Type Aircon  
11.04 EER



- 6th Sense Technology
- Zen Inverter Technology
- HEPA Filter
- Anti-bacterial Fin
- Remote Control
- Super Silent Mode
- Around U Mode

### SAH12CIW / OD

1.5 HP Premium Inverter Split-Type Aircon  
11.05 EER

- Advanced Sleep Mode
- Rated Power Input:
  - 1.0 HP = 1450W
  - 1.5 HP = 1550W
- Color: White
- Indoor Unit Net Dimension (h:w:d)
  - 28 : 79.4 : 21.8 cm (SAH09CIW / OD)
  - 28 : 86.3 : 21.9 cm (SAH12CIW / OD)

### SIA180B IN

2.0 HP Inverter Split-Type Aircon  
10.54 EER



- InverterPlus Technology – Can save up to 60% energy consumption
- Energy-efficient R410a Refrigerant
- AccuTemp Control
- 1W Standby Power Consumption
- 3-in-1 Filtration System
- Auto-Clean Function
- Self-Diagnosis Function

### SIA240B IN

2.5 HP Inverter Split-Type Aircon  
9.82 EER

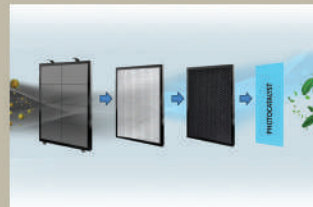
- Turbo Cooling Function
- Soft Start
- Gold Fin Condenser
- LED Display
- Remote Control
- Cooling Capacity:
  - 18000 BTU/hr (SIA180B IN)
  - 24000 BTU/hr (SIA240B IN)
- Cooling Rated Input:
  - 1772W (SIA180B IN)
  - 2067W (SIA240B IN)
- Dimension (h:w:d)
  - 29.1 : 90 : 22 cm (SIA180B IN)
  - 32 : 102.5 : 23.1 cm (SIA240B IN)

# AIR PURIFIER



## 6th Sense™ Technology

The air purifier has built-in sensors that measure the environment's air quality, and adjusts automatically to provide the appropriate purification settings.



## Powershield Filtration System

The 4-Stage Filtration system includes Pre-filter, HEPA filter, Active Carbon filter, and Photocatalyst UV light to get rid of harmful substances in the air, from common particles such as hair and dust to gases like formaldehyde and benzene.

### AP625 W

25 m<sup>2</sup> Air Purifier



- 6th Sense Technology
- 6th Sense Powershield Filtration System: Pre-Filter, HEPA Filter, Active Carbon Filter
- Can filter particles from PM 2.5 to PM 0.3
- 250 m<sup>3</sup>/hr CADR rate<sup>3</sup>
- 99.8% Tanning Efficiency
- Odor Sensor
- Dust Sensor
- Filter Cleaning Indicator
- Air Quality Level Indicator
- Reliable and Trusted with ECARF (EU) certified
- Input Power: 70W
- Dimension (h:w:d) 61.5 : 35.1 : 20.2 cm

### AP636 W

37 m<sup>2</sup> Air Purifier



- 6th Sense Technology
- 6th Sense Powershield Filtration System: Pre-Filter, HEPA Filter, Active Carbon Filter, Nano Photocatalyst UV Light
- Can filter particles from PM 2.5 to PM 0.3
- 306 m<sup>3</sup>/hr CADR rate
- 3.4/hr ACH
- 99.8% Tanning Efficiency
- Odor Sensor
- Dust Sensor
- Filter Cleaning Indicator
- Air Quality Level Indicator
- Reliable and Trusted with ECARF (EU) certified
- Dimension (h:w:d) 61.5 : 40 : 24.2 cm

# MICROWAVE OVEN



## Auto-Cook Function

This function is ideal for quick meal preparations as it removes the unnecessary guesswork by pre-setting the power level and cooking duration for your food.



## Grill Function

Aside from defrosting and reheating, selected Whirlpool microwave ovens are equipped with Grill Function that allows you to sear and cook various meats while preserving their rich flavors.



## Steam Function

Explore healthier way of cooking by immersing fish, vegetables, and other food in steam for better retention of nutrients and flavors while also preventing them from drying out.



## Wide Product Variety

Whirlpool offers a wide selection of microwave ovens that are equipped with advanced features to cater to different household needs.



### MWX201 XEB 20-liter Mechanical Microwave Oven

- 6 Power Level
- Defrost Function
- Mechanical Control
- Input Power: 700W
- Color: Black
- Dimension (h:w:d)  
26.2 : 45.2 : 36 cm



### MWX201 WH 20-liter Mechanical Microwave Oven

- 6 Power Level
- Defrost Function
- Mechanical Control
- Input Power: 700W
- Color: White
- Dimension (h:w:d)  
26.2 : 45.2 : 36 cm



### MWX201 MS 20-liter Mechanical Microwave Oven

- 6 Power Level
- Defrost Function
- Mechanical Control
- Input Power: 700W
- Color: Silver
- Dimension (h:w:d)  
26.2 : 45.2 : 36 cm



### MWX203 BL 20-liter Digital Microwave Oven

- 11 Power Level
- Auto-cook Function
- Defrost function
- Digital Control
- Input Power: 700W
- Color: Black
- Dimension (h:w:d)  
26.2 : 45.5 : 35.2 cm



### MWX203 ESB 20-liter Digital Microwave Oven

- 11 Power Level
- Auto-cook Function
- Defrost function
- Digital Control
- Input Power: 700W
- Color: Silver
- Dimension (h:w:d)  
26.2 : 45.5 : 35.2 cm



### MWX254 SS 25-liter Digital Microwave Oven

- 7 Power Level
- Auto-cook Function
- Defrost Function
- Grill Function
- Digital Control
- Input Power: 900W
- Color: Stainless Steel
- Dimension (h:w:d)  
28.1 : 48.3 : 40 cm



### MWP253 SX 25-liter Digital Microwave Oven

- 7 Power Level
- Auto-cook Function
- Defrost Function
- Grill Function
- Digital Control
- Input Power: 900W
- Color: Silver
- Dimension (h:w:d)  
28.1 : 48.3 : 41.9 cm



### MWP301 BL 30-liter Digital Microwave Oven

Estimated Cost Per Minute: P0.23

- 7 Power Level
- Auto-cook Function
- Defrost Function
- Digital Control
- Input Power: 900W
- Color: Black
- Dimension (h:w:d)  
30 : 53.9 : 39.8 cm



### MWP305 ES 30-liter Digital Microwave Oven

Estimated Cost Per Minute: P0.24

- 7 Power Level
- Auto-cook Function
- Defrost Function
- Grill Function
- Steam Function
- Digital Control
- Input Power: 900W
- Color: Silver
- Dimension (h:w:d)  
30 : 53.9 : 39.8 cm

# COOKING RANGE



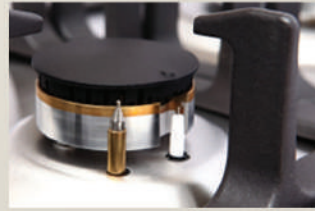
## Big Oven Capacity

The large oven capacity provides versatility in cooking as you can fit in food of different sizes – from delicious treats like cake and cookies to savory dishes like steak and chicken.



## Sabaf Burner

Each Whirlpool cooking range is equipped with Sabaf gas burners that provide excellent flame distribution, helping you save up to 10% on gas consumption compared to normal burners.



## Safety Valve

To ensure a safe cooking environment, the safety valve on the stove and the oven prevents gas leakage by shutting off the gas supply as soon as the flame is cut off.



## Cast Iron Pan Support

Each gas burner is equipped with a cast iron pan support that can withstand high heat during cooking sessions. It also provides extra durability when using heavy pans and other cookware.



### ACG540 IX 50 cm Cooking Range 4 Gas Burners

- Sabaf Burners
- Electric Ignition
- Cast Iron Pan Support
- Oven Light
- Burner & Oven Safety Valve
- Double Glass Oven Door
- 53 L Oven Capacity
- Gas Oven + Gas Grill
- Stainless Steel Cooktop
- Dimension (h:w:d)  
90 : 50 : 60 cm



### ACG531 IX 50 cm Cooking Range 3 Gas Burners + 1 Electric Hot Plate

- Sabaf Burners
- Electric Ignition
- Cast Iron Pan Support
- Oven Light
- Rotisserie
- Burner & Oven Safety Valve
- Double Glass Oven Door
- 53 L Oven Capacity
- Gas Oven + Gas Grill
- Stainless Steel Cooktop
- Dimension (h:w:d)  
90 : 50 : 60 cm



### AEG640 IX 60 cm Cooking Range 4 Gas Burners

- Sabaf Burners
- Electric Ignition
- Cast Iron Pan Support
- Oven Light
- Rotisserie
- Burner & Oven Safety Valve
- Double Glass Oven Door
- 73 L Oven Capacity
- Gas Oven + Electric Grill
- Stainless Steel Cooktop
- Dimension (h:w:d)  
90 : 60 : 60 cm



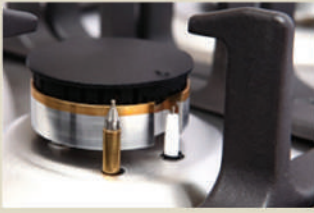
### AEG631 IX 60 cm Cooking Range 3 Gas Burners + 1 Electric Hot Plate

- Sabaf Burners
- Electric Ignition
- Cast Iron Pan Support
- Oven Light
- Rotisserie
- Burner & Oven Safety Valve
- Double Glass Oven Door
- 73 L Oven Capacity
- Gas Oven + Electric Grill
- Stainless Steel Cooktop
- Dimension (h:w:d)  
90 : 60 : 60 cm



Whirlpool's Artisan Cooking Ranges are equipped with **premium burners**, **multifunctional oven**, and **safety features**, making them the perfect partner in the kitchen. The combination of a stove and an oven not only saves space but also allows multitasking and flexibility while cooking.

# BUILT-IN HOB



## Safety Valve

To ensure a safe cooking environment, the safety valve on the stove prevents gas leakage by shutting off the gas supply as soon as the flame is cut off.



## Cast Iron Pan Support

Each gas burner is equipped with a cast iron pan support that can withstand high heat during cooking sessions. It also provides extra durability when using heavy pans and other cookware.



## Stainless Steel Cooktop

The stainless steel material makes the cooktop durable and resistant to scratches, dents, and high heat so you can be assured that it will last even after many years of use.



## Tempered Glass

The tempered glass material is perfect for modern and functional kitchens because not only does it increase the aesthetic appeal of your kitchen but also makes cleaning up easier.



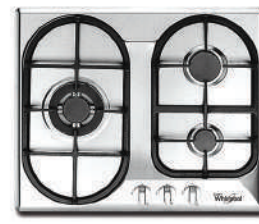
### AKC604E IX 60 cm Built-in Hob 4 Electric Hot Plates

- Electric Ignition
- Mechanical Control
- Stainless Steel 304
- 7.0kW Total Power
- Dimension (w:d)  
59 : 50 cm



### AKC640C IX 60 cm Built-in Hob 4 Gas Burners

- Cast Iron Pan Support
- Electric Ignition
- Safety Valve
- Mechanical Control
- Stainless Steel 304
- Dimension (w:d)  
59 : 50 cm



### AKC630C IX 60 cm Built-in Hob 3 Gas Burners

- Cast Iron Pan Support
- Electric Ignition
- Safety Valve
- Mechanical Control
- Stainless Steel 304
- Dimension (w:d)  
59 : 50 cm



### AKC631E IX 60 cm Built-in Hob 3 Gas Burners + 1 Electric Hot Plate

- Enamel Pan Support
- Electric Ignition
- Safety Valve
- Mechanical Control
- Stainless Steel 304
- Dimension (w:d) 59 : 50 cm



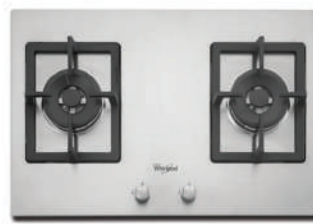
### AKC640E IX 60 cm Built-in Hob 4 Gas Burners

- Enamel Pan Support
- Electric Ignition
- Safety Valve
- Mechanical Control
- Stainless Steel 304
- Dimension (w:d) 59 : 50 cm



### AKC720C IX 70 cm Built-in Hob 2 Gas Burners

- Cast Iron Pan Support
- Electric Ignition
- Safety Valve
- Mechanical Control
- Stainless Steel 304
- Dimension (w:d) 68 : 50 cm



### AKC7250C IX 70 cm Built-in Hob 2 Gas Burners

- Cast Iron Pan Support
- Electric Ignition
- Safety Valve
- Mechanical Control
- Stainless Steel 304
- Dimension (w:d) 68 : 50 cm



### AKC721C IX 70 cm Built-in Hob 2 Gas Burners + 1 Electric Hot Plate

- Cast Iron Pan Support
- Electric Ignition
- Safety Valve
- Mechanical Control
- Stainless Steel 304
- Dimension (w:d) 68 : 50 cm



### AKC730C IX 70 cm Built-in Hob 3 Gas Burners

- Cast Iron Pan Support
- Electric Ignition
- Safety Valve
- Mechanical Control
- Stainless Steel 304
- Dimension (w:d) 68 : 50 cm



### AKC720C BL 70 cm Built-in Hob 2 Gas Burners

- Cast Iron Pan Support
- Electric Ignition
- Safety Valve
- Mechanical Control
- Black Tempered Glass
- Dimension (w:d) 68 : 50 cm



### AKC730C BL 70 cm Built-in Hob 3 Gas Burners

- Cast Iron Pan Support
- Electric Ignition
- Safety Valve
- Mechanical Control
- Black Tempered Glass
- Dimension (w:d) 68 : 50 cm

## BUILT-IN HOB

### 2-IN-1 INDUCTION HOB (BUILT-IN OR TABLETOP)



**ACI732S / BLP**  
70 cm  
2 Induction Zones  
Schott Ceran Glass



**ACH732 / BLP**  
70 cm  
1 Induction Zone  
+ 1 Vitroceramic Zone

- Residual Heat Indicator
- 10-Level Temperature Control
- Sensor Touch Control
- Timer
- Child Lock Function
- Built-in or Table Top Design
- Input Power: 2800W
- Color: Black Glass
- Dimension (w:d) 73.5 : 41.5 cm



**AKC9350C IX**  
90 cm Built-in Hob  
3 Gas Burners

- Cast Iron Pan Support
- Electric Ignition
- Safety Valve
- Mechanical Control
- Stainless Steel 304
- Dimension (w:d) 86 : 50 cm



**AKC930C BL**  
90 cm Built-in Hob  
3 Gas Burners

- Cast Iron Pan Support
- Electric Ignition
- Safety Valve
- Mechanical Control
- Black Tempered Glass
- Dimension (w:d) 86 : 50 cm



**AKC950C IX**  
90 cm Built-in Hob  
5 Gas Burners

- Cast Iron Pan Support
- Electric Ignition
- Safety Valve
- Mechanical Control
- Stainless Steel 304
- Dimension (w:d) 86 : 50 cm



**AKC921C IX**  
90 cm Built-in Hob  
2 Gas Burners  
+ 1 Ceramic Zone

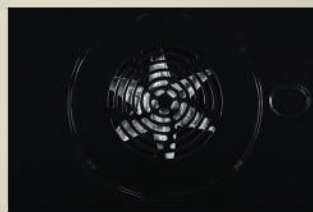
- Cast Iron Pan Support
- Electric Ignition
- Safety Valve
- Mechanical Control
- Stainless Steel 304
- Dimension (w:d) 86 : 50 cm

## BUILT-IN OVEN



### Convection Fan

The convection fan, paired with an exhaust system, circulates hot air inside the oven cavity to cook food evenly and quickly – helping you get better results from your recipes.



### Cooling Fan

The top of the oven is designed with a vent where cool air comes through to prevent the components outside the oven cavity from overheating. This makes the control panel and door safe to touch while the oven is in use.

- 57 Liters Oven Capacity
- Rotisserie
- Cooking Timer
- Electric Oven
- Convection Oven
- Cooling Fan
- Triple Glass Door
- Black Enamel Cavity
- Stainless Steel
- 2560W



**AKZ861S IX**  
60 cm Built-in Oven

- 8 Cooking Functions
- Digital Control



**AKZ661 IX**  
60 cm Built-in Oven

- 5 Cooking Functions
- Mechanical Control

# RANGE HOOD

- 3-Speed Push Button Control
- Washable Aluminum Filter
- Active Carbon Filter
- Stainless Steel
- 2 x 40W Lamp



## Wide Variety of Range Hoods

Every busy kitchen must be kept free from odors, smoke, grease, and other air pollutants while cooking. To help improve the air quality in your kitchen, Whirlpool carries a wide variety of range hoods that are designed with premium materials and powerful extraction capacities.



### AKR851 IX 70 cm Flat Decorative Range Hood

- Single Motor
- Suction Power: 440 m<sup>3</sup>/hr
- Input Power: 210W



### AKR914 IX 90 cm Glass Canopy Range Hood

- Single Motor
- Suction Power: 780 m<sup>3</sup>/hr
- Input Power: 360W



### AKR554/1 IX 60 cm Glass Canopy Range Hood

- Single Motor
- Suction Power: 433 m<sup>3</sup>/hr
- Input Power: 160W



### AKR912U IX 90 cm T-Box Range Hood

- Single Motor
- Suction Power: 820 m<sup>3</sup>/hr
- Input Power: 360W



### AKR928 IX 90 cm Slim Hood

- Double Motor
- Suction Power: 450 m<sup>3</sup>/hr
- Input Power: 240W

*Also Available: 60 cm AKR628 IX*



### AKR921 IX 90 cm Regular Range Hood

- Double Motor
- Suction Power: 480 m<sup>3</sup>/hr
- Input Power: 380W

*Also Available: 60 cm AKR621 IX*

## MAIN SHOWROOMS, PARTS & SERVICE LOCATIONS

<b>MANILA</b>	Exatech Bldg. #56 Cordillera St. cor. E. Rodriguez Sr. Ave., Quezon City	(02) 8230-1555
<b>CEBU</b>	Exatech-Cebu Bldg. #60 Castilex Compound, Cabancalan, Mandaue City	(032) 345-3105
<b>DAVAO</b>	Exatech-Davao Bldg., Excellence St., Doña Luisa Subdivison, Phase II, Quimpo Blvd., Ecoland, Davao City	(082) 233-1068
<b>BACOLOD</b>	Exatech-Bacolod Bldg. Hilado Extension, Bacolod City	(034) 441-9912
<b>ILOILO</b>	Exatech-Iloilo Bldg. De La Rama Street, City Proper, Iloilo City	(033) 503-6834
<b>LEGAZPI</b>	Exatech-Legazpi Bldg. 831 B3 F. Aquende Drive, Brgy. 40 Cruzada, Legazpi City	(052) 742-2127
<b>PALAWAN</b>	Exatech-Palawan Bldg. Rizal Street, Brgy. Magkakaibigan, Puerto Princesa, Palawan	(048) 433-5914
<b>ISABELA</b>	Exatech-Isabela Bldg. Lot 1-A Prensa, Cauayan City, Isabela	(078) 325-1052
<b>BAGUIO</b>	Exatech-Baguio Bldg., Corner Major Mane Road, Brgy. Greenwater, Loakan Dist., Baguio City	(074) 246-7532

Exclusively Distributed by:

**EXATECH**  
EXCELLENCE APPLIANCE TECHNOLOGIES

**OVER 500  
SERVICE CENTERS  
NATIONWIDE**

f Whirlpool Philippines @whirlpoolphilippines

[www.whirlpool.com.ph](http://www.whirlpool.com.ph)

DECEMBER 2022

