

At Whirlpool, we believe that well-being begins in the comfort of your own home. Our innovative appliances are crafted to make your daily tasks easier, allowing you to put your energy into the things that truly matter.

# Whirlpool

SENSING WHAT MATTERS



**American home appliances brand**  
Trusted worldwide over 110 years



# U.S. HEAVY-DUTY WASHER & DRYER

AMERICA'S **NO. 1** TRUSTED LAUNDRY APPLIANCE BRAND



## Heavy-Duty Design

The outer tub is made of galvanized steel, a hardwearing metal finish, while the inner tub is designed with stainless steel or ceramic to prevent rust, chipping, and corrosion, even after years of use.



## Deep Water Wash

For complete stain removal, this option provides deeper fill when clothes aren't fully immersed in water.



## Flex Vane Agitator

A single agitator is placed in the center of the tub to rub against clothes, further breaking down dirt and stains.



## Dual Action Agitator

The movement rotates the clothes from the top to the bottom of the agitator for a more thorough wash. This ensures that every corner of the clothes is clean and free from stains.



### MAT20MN

**15 kg IEC Rated Capacity Commercial U.S. Top Load Washer**

- 7 Wash Cycles
- Deep Water Wash System
- Traditional Flex Vane Agitator
- Wash Temperature Selection
- Powerful Drive System
- Mechanical Control Panel
- Heavy-duty Cabinet
- Premium Porcelain – Enamel Top
- Child Lid Lock
- Color: White
- Dimension (h:w:d)  
108 : 68.58 : 66.04 cm



**MAYTAG**  
COMMERCIAL LAUNDRY

### MDG20MN

**15 kg IEC Rated Capacity Commercial U.S. Gas Dryer**

- 3 Dry Cycles
- **TurboVent Technology**
- Extra Large 7.4 cu. ft. capacity
- Dry Temperature Selection
- Mechanical Control Panel
- Heavy-Duty Cabinet
- Reversible Door
- Color: White
- Dimension (h:w:d)  
104 : 68.58 : 74.3 cm

### 4GWTW3000FW

**15 kg IEC Rated Capacity U.S. Heavy-Duty Washer**

- 11 Wash Cycles
- Quick Wash Cycle
- Whites Cycle
- Delicate Cycle
- 6th Sense Technology
- Dual Action Agitator
- Fabcon Dispenser
- Liquid Bleach Dispenser
- Mechanical Control Panel
- Deep Water Wash System
- Soil Level Selection
- Wash Temperature Selection
- Load Size Selection
- Extra Rinse Selection
- Galvanized Heavy-Duty Body
- White Porcelain Tub
- Child Lid Lock
- Color: White
- Dimension (h:w:d)  
109.22 : 69.85 : 68.58 cm



### 4KWED4815FW Electric 4GWGD4815FW Gas

**15 kg IEC Rated Capacity U.S. Heavy-Duty Dryer**

- 8 Dry Cycles
- Timed Dry Cycle
- Automatic Dry Cycle
- Energy Efficient Cycle
- Wrinkle Shield Cycle
- Fluff Air Cycle
- Temperature Function
- Electronic Control Panel
- Galvanized Heavy-Duty Body
- Color: White
- Dimension (h:w:d)  
110.2 : 73.6 : 70.5 cm



## AccuDry™ Sensing System

Excessive heat in the dryer can shrink clothes. This feature ensures thorough drying while maintaining quality, increasing garment lifespan.



## Wide-Opening Hamper Door

The wide-opening hamper door allows easy access to clothes during drying, while the drop-down door provides convenient space for folding.





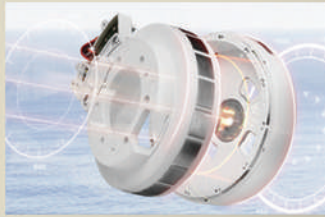
# TOP LOAD FULLY AUTOMATIC WASHER

AMERICA'S  
**NO. 1** TRUSTED  
LAUNDRY  
APPLIANCE BRAND



## 6th Sense™ Technology

The washer adjusts detergent, water, and time based on the laundry load, resulting in energy savings and optimal results in every cycle.



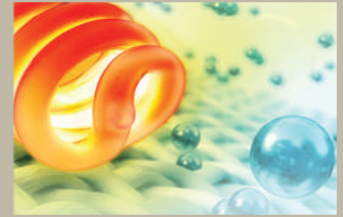
## Inverter Direct Drive Motor

The motor directly attached to the drum ensures stability, durability, and efficiency during wash cycles, while also providing excellent sound management for peaceful laundry sessions at home.



## Antibacterial Stainless Steel Drum

The stainless steel design enhances the washer's resistance to bacteria during laundry cycles.



## Hot Wash Technology

The Hot Wash Cycle heats water up to 60°C, effectively removing bacteria, viruses, dirt, and odor accumulated on clothes throughout the day. (WVIID only)

**BloomWash**  
Inverter Plus



## InverterPlus Technology

For maximum energy savings, the InverterPlus Technology automatically adjusts the settings of each wash cycle based on the internal load of the washer.

**12 YEAR**  
WARRANTY  
ON INVERTER MOTOR



## Low Water Pressure Requirement

Unlike typical fully automatic washers that require 10 psi, this feature fills the tub with just 4.3 psi, making it reliable for areas with low water pressure.

- 8 Wash Cycles (VWWD-VWIID)
- 12 Wash Cycles (VWED)
- 6th Sense Smart Start Technology
- Zen Inverter Technology
- Zen Direct Drive Motor
- Soft Touch Control Panel
- Hot Wash Function (WVIID)
- Hot Spring Rinse Function (WVIID)
- Start-Delay Function
- Child Lock Control Panel
- Drum Clean
- Antibacterial Stainless Steel Drum
- Soft-Closing Glass Lid
- Low Water Pressure Requirement
- Color: Quicksand Gold
- Input Power:
- 530W (VWED)
- 420W (WVIID)
- 400W (VWWD)
- Heater Power:
- 1500W (WVIID)
- Dimension (h:w:d)
- 95.5 : 54 : 56.8 cm (VWWD850/950/1050, WVIID1058)
- 98.5 : 57 : 59.3 cm (WVIID1158)
- 101.1 : 60.1 : 62.6 cm (WVED1403BG)

### VWWD850BKG

8.5 kg Inverter  
Top Load Washer



### VWWD950BKG

9.5 kg Inverter  
Top Load Washer



### VWWD1050BKG

10.5 kg Inverter  
Top Load Washer



### WVIID1058BKG

10.5 kg Inverter Top Load  
Washer + Hot Wash Technology



### WVIID1158BKG

11.5 kg Inverter Top Load  
Washer + Hot Wash Technology



### WVED1403BG

14.0 kg Inverter  
Top Load Washer



# TOP LOAD FULLY AUTOMATIC WASHER

AMERICA'S **NO. 1** TRUSTED LAUNDRY APPLIANCE BRAND

## Stainwash ULTRA

- 12 Wash Cycles
- 6th Sense Technology
- Stainwash Technology
- ZPF Technology
- Agipeller
- Detergent Dispenser
- Digital Control Panel
- Water Level Selection
- Hot Water Selection
- Express Wash Function
- Delay Wash Function
- Up to 740 rpm
- Hard Water Wash
- Stainless Steel Tub
- Galvanized Body
- Control Panel Child Lock
- Rat-Proof Base Cover



### Hard Water Wash

Hard Water Wash protects clothes from damage caused by mineral deposits and improves wash performance by 30%, resulting in cleaner clothes with enhanced detergent action.



### ZPF Technology

Compared to other washers, this feature fills the tub 50% faster even at water pressure as low as 2 psi.



### LHB802

#### 8 kg Top Load Fully Auto Washer

- Color: Graphite
- Input Power: 360W
- Heater Power: 1450W
- Dimension (h:w:d) 96.5 : 54 : 56 cm

Estimated Cost Per Wash



### Express Wash

This function reduces wash time by 30 to 40% for lightly soiled clothes, thereby saving energy and detergent.



### Delay Wash

The function allows you to conveniently set a desired finishing time for your laundry, with a delay option ranging from 3 to 24 hours.

## eco 6th sense



### 6th Sense™ Smart Start Technology

By pressing the power button for three seconds, the washer automatically detects the internal load and selects the optimal wash cycle, ensuring the best results each time.



### Energy Saver Cycle

This cycle promotes energy efficiency by consuming 50% less electricity and 30% less water than normal wash cycle.



- 4 Wash Cycles
- Shark-fin Pulsator
- Fabcon Dispenser
- Digital Control Panel
- Process Selection
- Water Level Selection
- Delay Wash Function
- Up to 850 rpm
- Low Water Pressure Requirement (4.3 psi)
- Stainless Steel Tub
- Galvanized Body
- Control Panel Child Lock
- Rat-Proof Base Cover
- Color: White

### LFP650WH

#### 6.5 kg Top Load Fully Auto Washer

- Input Power: 330W
- Dimension (h:w:d) 90 : 50 : 51.5 cm



- 6 Wash Cycles
- Energy Saver Cycle
- Shark-fin Pulsator
- Fabcon Dispenser
- Detergent Dispenser
- Digital Control Panel
- Process Selection
- Water Level Selection
- Delay Wash Function
- Up to 850 rpm
- Low Water Pressure Requirement (4.3 psi)
- Stainless Steel Tub
- Galvanized Body
- Control Panel Child Lock
- Rat-Proof Base Cover
- Color: Graphite

### LSP700GP

#### 7.0 kg Top Load Fully Auto Washer

- Input Power: 330W
- Dimension (h:w:d) 90 : 50 : 51.5 cm



- 9 Wash Cycles
- Energy Saver Cycle
- 6th Sense Smart Start Technology
- Shark-fin Pulsator
- Fabcon Dispenser
- Detergent Dispenser
- Digital Control Panel
- Process Selection
- Water Level Selection
- Delay Wash Function
- Up to 850 rpm
- Stainless Steel Tub
- Galvanized Body
- Control Panel Child Lock
- Rat-Proof Base Cover
- Color: Graphite

### LSP780GP

#### 7.8 kg Top Load Fully Auto Washer

- Input Power: 330W
- Dimension (h:w:d) 90.7 : 52 : 54.7 cm



### LSP1080GP

#### 10.8 kg Top Load Fully Auto Washer

- Input Power: 400W
- Dimension (h:w:d) 95 : 57 : 59.2 cm



- 6 Wash Cycles
- Express Wash Cycle
- Shark-fin Pulsator
- Fabcon Dispenser
- Detergent Dispenser
- Digital Control Panel
- Process Selection
- Water Level Selection
- Delay Wash Function
- Up to 850 rpm
- Low Water Pressure Requirement (4.3 psi)
- Soft Closing Lid
- Stainless Steel Tub
- Galvanized Body
- Control Panel Child Lock
- Rat-Proof Base Cover
- Color: Gold

### VWWC95003BO

#### 9.5 kg Top Load Fully Auto Washer

- Input Power: 400W
- Dimension (h:w:d) 94 : 50 : 56.3 cm



# FRONT LOAD WASHER

AMERICA'S  
**NO. 1**  
TRUSTED  
LAUNDRY  
APPLIANCE BRAND



## 6<sup>th</sup> Sense™ Technology

The washer adjusts detergent, water, and time based on the laundry load, resulting in energy savings and optimal results in every cycle.

*InverterPlus*

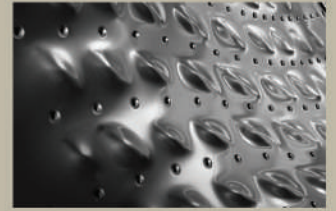
## InverterPlus™ Technology

For maximum energy savings, the InverterPlus Technology automatically adjusts the settings of each wash cycle based on the internal load of the washer.



## Hybrid Steam OxyCare

Combines steam, oxygen, and other suitable programs to effectively de-wrinkle and provide extra sanitation for clothes. (for 11 kg model)



## Stainless Steel Tub

The stainless steel design enhances the washer's durability, enabling it to withstand hard water and high spin speeds during laundry sessions.

*Radiant*  
Inverter Plus

**12 YEAR**  
WARRANTY  
ON INVERTER MOTOR

- 15 Wash Cycles
- 6th Sense Technology
- InverterPlus Technology
- Detergent Dispenser
- Fabcon Dispenser
- Digital Control Panel
- Hot Water Selection
- Spin Speed Selection
- Delay Wash Function
- Up to 1200 rpm
- Low Water Pressure Requirement (4.3 psi)
- Stainless Steel Tub
- Child Lock – Control Panel & Door
- Input Power: 300W
- Heater Power: 1800W



## Hot Wash Technology

The Hot Wash Cycle heats water up to 80°C, effectively removing bacteria, viruses, dirt, and odor accumulated on clothes throughout the day.



## Seamless Tub

The seamless design minimizes friction between clothes, preventing fibers from getting caught during wash and dry cycles.



## 3D Sensor

The 3D Sensor is an intelligent stabilizer system with shock absorption, reducing noise for peaceful laundry sessions at any time of the day.



## Drum Clean

The Drum Clean Cycle removes dirt residue on the inner and outer tub of the washer. It sanitizes the washer to prevent odor from clinging on to your clothes.



## WFRB752BHW

### 7.5 kg Inverter Front Load Washer

- Color: White
- Dimension (h:w:d)  
85 : 60 : 58 cm

Estimated Cost Per Wash



## WFRB852BHG

### 8.5 kg Inverter Front Load Washer

- Color: Graphite
- Dimension (h:w:d)  
85 : 60 : 58 cm

Estimated Cost Per Wash



*SaniCare*  
Inverter Plus

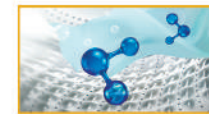
**12 YEAR**  
WARRANTY  
ON INVERTER MOTOR

- 10 Wash Cycles
- 6th Sense Technology
- Zen Inverter Technology
- Drum Sterilization
- Digital Control Panel
- Spin Speed Selection
- Stainwash Cycle
- Sanitize Wash Cycle
- Up to 1400 rpm
- Low Water Pressure Requirement (4.3 psi)
- Antibacterial Drawer and Bellow
- Power: 1750W



## Sanitize Wash Cycle

This cycle heats water up to 90°C and enables you to add laundry sanitizer for guaranteed removal of bacteria and viruses from clothes.



## OxyCare Technology

Using the natural power of oxygen, this feature effectively removes bacteria and viruses from both clothes and non-apparel items.

(for 11 kg model)



## FWEB9503BS

### 9.5 kg Inverter Front Load Washer

- Color: Silver
- Dimension (h:w:d)  
85 : 60 : 60 cm

## FWEB10503BS

### 10.5 kg Inverter Front Load Washer

- Color: Silver
- Dimension (h:w:d)  
85 : 60 : 63.5 cm



## FWMD11003BG

### 11 kg Inverter Front Load Washer

- Zen Direct Drive Motor
- OxyCare Technology
- Hybrid Steam OxyCare
- Interactive Control Panel
- Color: Grey
- Dimension (h:w:d)  
84.5 x 59.5 x 60.5 cm





# FRONT LOAD WASHER & DRYER

AMERICA'S **NO. 1** TRUSTED LAUNDRY APPLIANCE BRAND

**SaniCare**  
Inverter Plus

**ZEN INVERTER TECHNOLOGY**

## Zen Inverter Technology

The inverter motor operates quietly and adjusts drum rotation for optimal performance and efficiency.

**12 YEAR**  
WARRANTY  
ON INVERTER MOTOR

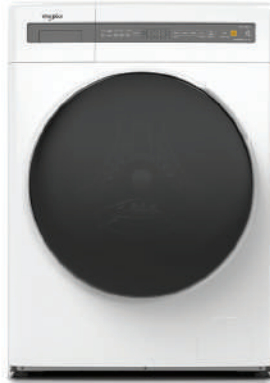
- Zen Inverter Technology
- 10 Wash Cycles
- 6th Sense Technology
- Sanitize Wash Cycle
- Hot Air Refresh Cycle
- Wash & Dry 60' Cycle
- Antibacterial Compartment & Bellow
- Digital Control Panel
- Spin Speed Selection
- 1400 rpm

WWEB8503BW:

- Color: White
- Dimension (h:w:d)  
85 : 60 : 60 cm

WWEB11703BG:

- Color: Grey
- Dimension (h:w:d)  
85 : 60 : 63.5 cm



**WWEB8503BW**

8 kg Wash / 5 kg Dry  
Inverter Washer-Dryer Combo



**WWEB11703BG**

11 kg Wash / 7 kg Dry  
Inverter Washer-Dryer Combo



## Hot Air Refresh

Freshens up clothes and non-apparel items such as pillows and stuffed toys by using 90°C hot air.



## Antibacterial Compartment & Bellow

Built with an antimicrobial agent to prevent bacterial growth, even with long-term usage.



## Wash & Dry 60'

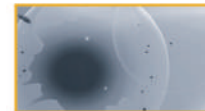
Completes a full wash and dry cycle for small laundry loads in just 60 minutes.

## FRONT LOAD DRYER



## Shoe Dryer Rack

The rack inside the dryer ensures extra care for your shoes, preventing damage during the drying cycle.



## Anti-Bacteria Cycle

The dryer's hot air not only removes excess moisture but also disinfects and prevents bacterial growth on freshly-laundered clothes.

## Space-Saving Design

Our front-load washers can be stacked with compatible tumble dryers, saving space and providing more room for other chores in the laundry area.



- 13 Dry Cycles
- Anti-Bacteria Cycle
- Digital Control Panel
- Quick Function
- Half Load Function
- Delay Start Function
- Child Lock – Control Panel and Door Lock
- Color: White
- Input Power: 2200W
- Dimension (h:w:d)  
85 : 59.5 : 55.5 cm

Can be stacked with WFRB752BHW

**AWD72AWP**

7.2 kg Front Load Electric Dryer



- 13 Dry Cycles
- Anti-Bacteria Cycle
- Digital Control Panel
- Quick Function
- Half Load Function
- Delay Start Function
- Shoe Dryer Rack
- Child Lock – Control Panel and Door Lock
- Color: Graphite
- Input Power: 2200W
- Dimension (h:w:d)  
85 : 59.5 : 55.5 cm

Can be stacked with FWEB10503BS, FWEB9503BS, WFRB852BHG

**AWD80AGP**

8 kg Front Load Electric Dryer

# TWIN TUB WASHER

\*\*\*\*\*  
AMERICA'S **NO. 1** TRUSTED  
LAUNDRY  
APPLIANCE BRAND



## Shockproof and Waterproof Control Panel

This feature safeguards the control panel and components from damage caused by water spills and shock during washing and drying cycles.



## Rust-Proof Plastic Body

The washer's body is made of rust-proof plastic, ensuring its durability and longevity for many years.



## Double Wall Lining

The tub features double-wall lining for optimal durability and protection.



## 3D Lint Filter

This filter collects lint during the wash cycle, guaranteeing fresh and clean clothes after every wash.



## 3D Scrub Technology

The 3D Scrub Pads rotate clothes in an up-down motion, thereby effectively removing even the toughest stains.



## Hard Water Cycle

This cycle adjusts the wash program to enhance detergent action, keeping clothes soft, fresh, and free from damage caused by mineral deposits from hard water.

- 5 Wash Cycles
- Hard Water Wash Cycle
- Pulsator
- 3D Scrubbers
- Shockproof & Waterproof Control Panel
- Wash Timer
- Spin Timer
- Up to 1400 rpm
- Rust-Proof Plastic Body
- Rat-Proof Base
- 3D Lint Filter
- Color: Graphite
- Roller Feet
- Input Power:  
350W (WTPC1100BJG)  
375W (WTAC1300BJG)
- Dimension (h:w:d)  
96.5 : 88.6 : 51.5 cm (WTPC1100BJG)  
102 : 94 : 56.7 cm (WTAC1300BJG)



**WTPC1100BJG**  
11.0 kg Twin Tub Washer



**WTAC1300BJG**  
13.0 kg Twin Tub Washer



## Pulsator

Creates water currents inside the tub, allowing clothes to scrub against each other and effectively remove stains.



## Air Dry Technology

Drives high-speed air inside the tub to remove excess moisture from clothes, resulting in odor-free laundry and reduced drying time.

- 2 Wash Cycles
- 3 Wash Cycles (LWT1020)
- Pulsator
- Wash Timer
- Spin Timer
- Air Dry (LWT1020)
- Up to 1550 rpm
- Up to 1650 rpm (LWT1020)
- Rust-Proof Plastic Body
- Rat-Proof Base
- Lint Filter
- Color: White
- Black Lid, White Body (LWT1020)
- Input Power:  
300W (LWT650)  
320W (LWT700)  
400W (LWT800 ; LWT1020)
- Dimension (h:w:d)  
83.7 : 75 : 42 cm (LWT650)  
88.9 : 76.2 : 44.4 cm (LWT700)  
94.6 : 78.7 : 44.4 cm (LWT800)  
94.6 : 79.3 : 46.9 cm (LWT1020)



**LWT650**  
6.5 kg Twin Tub Washer



**LWT700**  
7.0 kg Twin Tub Washer



**LWT800**  
8.0 kg Twin Tub Washer



**LWT1020**  
10.2 kg Twin Tub Washer



# MULTI-DOOR & SIDE-BY-SIDE REFRIGERATOR



## 6th Sense Technology

Smart sensors detect the internal load and ambient temperature of the refrigerator, enabling it to deliver optimal cooling performance and ensure long-lasting food freshness.



## Zen Inverter Technology

This innovative technology reduces noise levels and achieves efficient cooling inside the refrigerator, consuming up to 60% less energy.



## Flexi Freeze Technology

The Flexi Freeze compartment offers three temperature settings (Soft, Mild, and Deep Freeze) that allow you to adjust the cooling level based on the type of food you need to store.



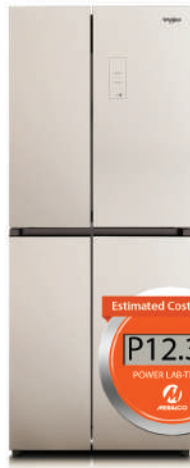
## Photosynthesis LED Light

The Photosynthesis LED Light replicates sunlight, ensuring prolonged freshness and nutrient preservation for fruits and vegetables.



### 6WFD16NIKGG

16 cu.ft. Inverter French Door Refrigerator



### 6WM16NIHGG

16 cu.ft. Inverter Multi-Door Refrigerator



### 6WM24NIHAS

24 cu.ft. Inverter Multi-Door Refrigerator

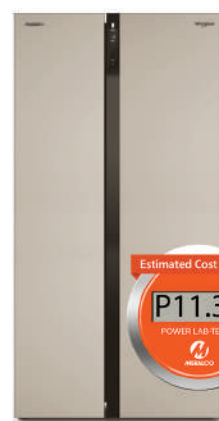
- Zen Inverter Technology
- 6th Sense Technology
- Smart Mode
- Quick Cooling Mode
- Quick Freezing Mode
- Flexi Freeze Mode (6WM24NIHAS)
- Smart Defrosting
- Flexi Freeze Compartment (6WM24NIHAS)
- Child Lock - Control Panel
- Antibacterial Filter
- Counter Depth Design
- Color: Stainless Steel (6WM24NIHAS), Glass Gold (6WM16NIHGG, 6WFD16NIKGG)
- Input Power: 255W (6WM24NIHAS), 180W (6WM16NIHGG, 6WFD16NIKGG)
- Dimension (h:w:d)  
187.4 : 90.5 : 69 cm (6WM24NIHAS)  
187.4 : 69.3 : 71.5 cm (6WM16NIHGG, 6WFD16NIKGG)



### 6WS21NIHGG

21 cu.ft. Inverter Side-by-Side Refrigerator

- Zen Inverter Technology
- 6th Sense Technology
- Smart Mode
- Quick Cooling Mode
- Quick Freezing Mode
- Photosynthesis LED Light
- Smart Defrosting
- Child Lock - Control Panel
- Antibacterial Filter
- Counter Depth Design
- Color: Glass Gold
- Input Power: 200W
- Dimension (h:w:d)  
180.2 : 91.5 : 72.7 cm



### 6WSP21NIHPG

21 cu.ft. Inverter Side-by-Side Refrigerator

- Zen Inverter Technology
- 6th Sense Technology
- Smart Mode
- Quick Cooling Mode
- Quick Freezing Mode
- Photosynthesis LED Light
- Smart Defrosting
- Child Lock - Control Panel
- Antibacterial Filter
- Counter Depth Design
- Color: Gold
- Input Power: 225W
- Dimension (h:w:d)  
180.2 : 91.5 : 72.7 cm

\*As tested by the Department of Energy



# TOP MOUNT REFRIGERATOR



## 6th Sense™ Technology

Smart sensors detect the internal load and ambient temperature of the refrigerator, enabling it to deliver optimal cooling performance and ensure long-lasting food freshness.



## Microblock™ Technology

The antimicrobial crisper material prevents bacterial growth, ensuring food freshness for up to 15 days.



## Deep Freeze Technology

A powerful fan increases the speed and circulation of cold air inside the refrigerator, resulting in 80% faster cooling and 70% quicker ice making.



## Energy-efficient R600A Refrigerant

The eco-friendly R600A refrigerant rapidly absorbs heat inside the fridge, enabling faster cooling and optimal functioning at the lowest possible cost.



- IntelliSense Inverter Technology
- Adaptive Intelligence Technology
- Convertible Freezer (5-in-1 Mode)
- Energy-efficient Embraco Compressor
- R600a Refrigerant
- Zeolite Technology
- Fresh Flow Air Tower with Flexi Vents
- Microblock Technology
- Active Deo
- Freshonizer
- Input Power: 180W
- Color: Mirror Dark Stainless Steel
- Dimension (h:w:d)  
172 : 57 : 67 cm (6WIN105UBS)  
168 : 62 : 67.5 cm (6WIN130UBS)



**6WIN105U BS**  
10.5 cu.ft. Inverter  
No-Frost Refrigerator

Estimated Cost Per Day  
**P6.35**  
POWER LAB-TESTED



**6WIN130U BS**  
13 cu.ft. Inverter  
No-Frost Refrigerator

Estimated Cost Per Day  
**P7.61**  
POWER LAB-TESTED



The combination of **Whirlpool's 6th Sense Technology** and **Inverter Technology** provides superior energy savings unmatched by other refrigerators in the market.



**IntelliFresh**  
REFRIGERATOR



## BETTER THAN INVERTER



**6WBI85 USS**  
8.5 cu.ft.  
No-Frost Refrigerator

Estimated Cost Per Day  
**P6.47**  
POWER LAB-TESTED

- 6th Sense Technology
- Tri-Sensor Advanced Technology
- Microblock Technology
- Deep Freeze Technology
- Energy-efficient R600a Refrigerant
- Air Tower Cooling FreshFlow with Flexi Vents
- Freshonizer
- Active Deo Filter
- Color: Stainless Steel
- Input Power: 125W
- Dimension (h:w:d)  
150 : 57 : 67 cm (6WBI85USS)  
159 : 57 : 67 cm (6WBI95USS)  
168 : 62 : 67.5 cm (6WBI120USS)  
164 : 70 : 72 cm (6WBI160USS)

Other models:

**6WBI95 USS 9.5 cu.ft.**  
Estimated Cost Per Day: P9.17

**6WBI120 USS 12 cu.ft.**  
Estimated Cost Per Day: P8.73

**6WBI160 USS 16 cu.ft.**  
Estimated Cost Per Day: P10.13

## UNBEATABLE ENERGY SAVINGS



**6WBN858 SV**  
8.5 cu.ft.  
No-Frost Refrigerator

Estimated Cost Per Day  
**P7.12**  
POWER LAB-TESTED

- 6th Sense Technology
- Microblock Technology
- Deep Freeze Technology
- Energy-efficient R600a Refrigerant
- Twin Cooling Gel
- Air Tower Cooling FreshFlow with Flexi Vents
- Freshonizer
- Active Deo Filter
- Color: Silver
- Input Power: 125W
- Dimension (h:w:d)  
150 : 57 : 67 cm (6WBN858SV)  
159 : 57 : 67 cm (6WBN958SV)

Other model:

**6WBN958 SV 9.5 cu.ft.**  
Estimated Cost Per Day: P8.54

# SOLID TOP CHEST FREEZER



## Dual Function Technology

For maximum flexibility, the temperature of the chest freezer can be adjusted to function as either a chiller or freezer, depending on the type of food you will store.



## Inverter Technology

The inverter motor saves up to 60% energy by running efficiently while delivering high cooling performance.

### WHH07DC6

7 cu.ft. Inverter Solid Top Chest Freezer



### WHH11DC6

11 cu.ft. Inverter Solid Top Chest Freezer



### WHH14DC6

14 cu.ft. Inverter Solid Top Chest Freezer



- Inverter Technology
- R600A Refrigerant
- Dual Function Technology
- Electronic Control Panel
- Galvanized Interior
- LED Light
- Key Lock
- Input Power: 155W (7, 11 cu.ft.), 180W (14 cu.ft.)
- Color: White
- Net Dimension (h:w:d)
  - 84.5 : 90.5 : 54.5 cm (WHH07DC6)
  - 84.5 : 112 : 70 cm (WHH11DC6)
  - 84.5 : 130 : 70 cm (WHH14DC6)

# DISHWASHER



## Sanitize Function

This function utilizes hot water to effectively clean dishware, removing excess oil and dirt, while also eliminating up to 99.9% of bacteria and viruses.



## PowerDry Technology

The convection fan circulates hot air to remove moisture from the dishware, resulting in outstanding drying performance.

## SupremeClean™



### WCTD104PH

40 cm Countertop Dishwasher

- 6th Sense Technology
- Power Dry Technology
- 7 Wash Programs
- Start-Delay Function
- SaniRinse Function
- Energy Efficient
- 9-Liter Water Consumption
- Cutlery Basket
- Input Power: 850W
- Color: White
- Dimension (h:w:d) 43 : 41 : 40 cm



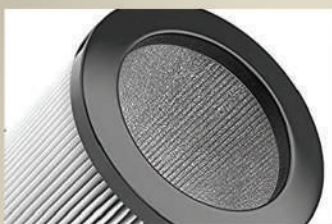
### WFC3C26

60 cm Freestanding Dishwasher

- 6th Sense Technology
- 8 Wash Programs
- Flexible Washing Option
- Single Rack Washing Option
- Rinse Aid Indicator
- Start-Delay Function
- Sanitize Function
- Energy Efficient
- 5-Liter Water Consumption
- Cutlery Basket
- Input Power: 1750W
- Color: White
- Dimension (h:w:d) 85 : 60 : 59 cm



# SPLIT-TYPE AIR CONDITIONER



## HEPA Filter

This filter enhances air quality by effectively absorbing up to 99.97% of harmful particles, including bacteria and viruses, in the air.



## InverterPlus™ Technology

This advanced technology enables the air conditioner to achieve up to 60% energy savings while delivering optimal cooling for a comfortable home environment.

### SAH09CIW / OD

1.0 HP Premium Inverter  
Split-Type Aircon  
11.04 EER

### SAH12CIW / OD

1.5 HP Premium Inverter  
Split-Type Aircon  
11.06 EER

### SAH18CIW / OD

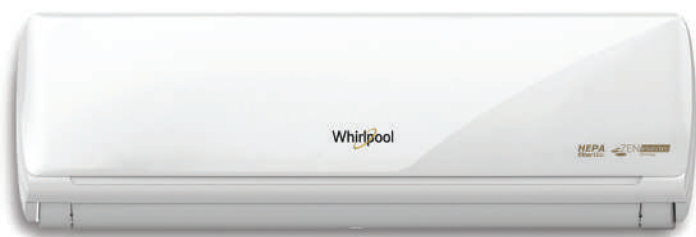
2.0 HP Premium Inverter  
Split-Type Aircon  
11.06 EER

### SAH24CIW / OD

2.5 HP Premium Inverter  
Split-Type Aircon  
11.06 EER



\*As tested by the Department of Energy.



- 6th Sense Technology
- Zen Inverter Technology
- HEPA Filter
- Antibacterial Fin
- Remote Control
- Super Silent Mode
- Around U Mode
- Advanced Sleep Mode

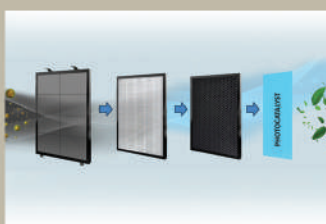
- Rated Power Input:
- 1.0 HP = 1450W
- 1.5 HP = 1550W
- 2.0 HP = 2200W
- 2.5 HP = 3100W
- Color: White
- Indoor Unit Net Dimension (h:w:d)
- 28 : 79.4 : 21.8 cm (SAH09CIW / OD)
- 28 : 86.3 : 21.9 cm (SAH12CIW / OD)
- 33 : 96.8 : 24.5 cm (SAH18CIW / OD)
- 33 : 113.8 : 24 cm (SAH24CIW / OD)

# AIR PURIFIER



## 6th Sense™ Technology

The air purifier features built-in sensors that automatically adjust the purification settings based on the measured air quality in the environment.



## Powershield Filtration System

The 4-Stage Filtration System comprises a **Pre-filter**, **HEPA filter**, **Active Carbon filter**, and **Photocatalyst UV light**, effectively removing harmful substances from the air, including common particles like hair and dust, as well as gases such as formaldehyde and benzene.

### AP625 W

25 m² Air Purifier

- 6th Sense Technology
- 6th Sense Powershield Filtration System: Pre-Filter, HEPA Filter, Active Carbon Filter
- Can filter particles from PM 2.5 to PM 0.3
- 250 m³/hr CADR rate3
- 99.8% Tanning Efficiency
- Odor Sensor
- Dust Sensor
- Filter Cleaning Indicator
- Air Quality Level Indicator
- Reliable and Trusted with ECARF (EU) certified
- Input Power: 70W
- Dimension (h:w:d)  
61.5 : 35.1 : 20.2 cm



### AP636 W

37 m² Air Purifier

- 6th Sense Technology
- 6th Sense Powershield Filtration System: Pre-Filter, HEPA Filter, Active Carbon Filter, Nano Photocatalyst UV Light
- Can filter particles from PM 2.5 to PM 0.3
- 306 m³/hr CADR rate
- 3.4/hr ACH
- 99.8% Tanning Efficiency
- Odor Sensor
- Dust Sensor
- Filter Cleaning Indicator
- Air Quality Level Indicator
- Reliable and Trusted with ECARF (EU) certified
- Dimension (h:w:d)  
61.5 : 40 : 24.2 cm



# MICROWAVE OVEN



## Auto-Cook Function

This function is perfect for quick meal preparations as it eliminates guesswork by pre-setting the power level and cooking duration for your food.



## Grill Function

Selected Whirlpool microwave ovens offer a Grill Function, allowing you to sear and cook various meats while preserving their rich flavors.



## Steam Function

Discover a healthier way of cooking by steaming fish, vegetables, and other foods, promoting better nutrient and flavor retention while preventing them from drying out.



## Wide Product Variety

Whirlpool offers a wide selection of microwave ovens with advanced features to accommodate various household needs.



### MWX201 XEB 20-liter Mechanical Microwave Oven

- 6 Power Level
- Defrost Function
- Mechanical Control
- Input Power: 700W
- Color: Black
- Dimension (h:w:d)  
26.2 : 45.2 : 36 cm



### MWX201 WH 20-liter Mechanical Microwave Oven

- 6 Power Level
- Defrost Function
- Mechanical Control
- Input Power: 700W
- Color: White
- Dimension (h:w:d)  
26.2 : 45.2 : 36 cm



### MWX201 MS 20-liter Mechanical Microwave Oven

- 6 Power Level
- Defrost Function
- Mechanical Control
- Input Power: 700W
- Color: Silver
- Dimension (h:w:d)  
26.2 : 45.2 : 36 cm



### MWX203 BL 20-liter Digital Microwave Oven

- 11 Power Level
- Auto-Cook Function
- Defrost function
- Digital Control
- Input Power: 700W
- Color: Black
- Dimension (h:w:d)  
26.2 : 45.5 : 35.2 cm



### MWX203 ESB 20-liter Digital Microwave Oven

- 11 Power Level
- Auto-Cook Function
- Defrost function
- Digital Control
- Input Power: 700W
- Color: Silver
- Dimension (h:w:d)  
26.2 : 45.5 : 35.2 cm



### MWP253 SX 25-liter Digital Microwave Oven

- 7 Power Level
- Auto-Cook Function
- Defrost Function
- Grill Function
- Digital Control
- Input Power: 900W
- Color: Silver
- Dimension (h:w:d)  
28.1 : 48.3 : 41.9 cm



### MWX254 SS 25-liter Digital Microwave Oven

- 7 Power Level
- Auto-Cook Function
- Defrost Function
- Grill Function
- Digital Control
- Input Power: 900W
- Color: Stainless Steel
- Dimension (h:w:d)  
28.1 : 48.3 : 40 cm



### MWP301 BL 30-liter Digital Microwave Oven

Estimated Cost Per Minute: P0.23

- 7 Power Level
- Auto-Cook Function
- Defrost Function
- Digital Control
- Input Power: 900W
- Color: Black
- Dimension (h:w:d)  
30 : 53.9 : 39.8 cm



### MWP305 ES 30-liter Digital Microwave Oven

Estimated Cost Per Minute: P0.24

- 7 Power Level
- Auto-Cook Function
- Defrost Function
- Grill Function
- Steam Function
- Digital Control
- Input Power: 900W
- Color: Silver
- Dimension (h:w:d)  
30 : 53.9 : 39.8 cm



# COOKING RANGE



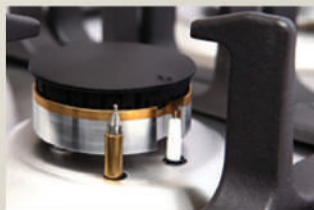
## Big Oven Capacity

The spacious oven capacity offers cooking versatility, accommodating various food sizes, ranging from delightful treats like cakes and cookies to savory dishes like steak and chicken.



## Sabaf Burner

Whirlpool cooking ranges feature Sabaf gas burners, ensuring even flame distribution and up to 10% savings on gas consumption compared to standard burners.



## Safety Valve

The safety valve on the stove and oven ensures a safe cooking environment by automatically shutting off gas supply when the flame is extinguished.



## Cast Iron Pan Support

The gas burners of Whirlpool cooking ranges feature cast iron pan supports, providing durability and heat resistance for cooking with heavy pans and cookware.



### ACG540 IX

#### 50 cm Cooking Range 4 Gas Burners

- Sabaf Burners
- Electric Ignition
- Cast Iron Pan Support
- Oven Light
- Burner & Oven Safety Valve
- Double Glass Oven Door
- 53 L Oven Capacity
- Gas Oven + Gas Grill
- Stainless Steel Cooktop
- Dimension (h:w:d)  
90 : 50 : 60 cm



### ACG531 IX

#### 50 cm Cooking Range 3 Gas Burners + 1 Electric Hot Plate

- Sabaf Burners
- Electric Ignition
- Cast Iron Pan Support
- Oven Light
- Rotisserie
- Burner & Oven Safety Valve
- Double Glass Oven Door
- 53 L Oven Capacity
- Gas Oven + Gas Grill
- Stainless Steel Cooktop
- Dimension (h:w:d)  
90 : 50 : 60 cm



### AEG640 IX

#### 60 cm Cooking Range 4 Gas Burners

- Sabaf Burners
- Electric Ignition
- Cast Iron Pan Support
- Oven Light
- Rotisserie
- Burner & Oven Safety Valve
- Double Glass Oven Door
- 73 L Oven Capacity
- Gas Oven + Electric Grill
- Stainless Steel Cooktop
- Dimension (h:w:d)  
90 : 60 : 60 cm



### AEG631 IX

#### 60 cm Cooking Range 3 Gas Burners + 1 Electric Hot Plate

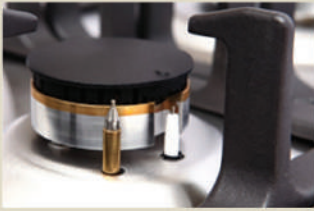
- Sabaf Burners
- Electric Ignition
- Cast Iron Pan Support
- Oven Light
- Rotisserie
- Burner & Oven Safety Valve
- Double Glass Oven Door
- 73 L Oven Capacity
- Gas Oven + Electric Grill
- Stainless Steel Cooktop
- Dimension (h:w:d)  
90 : 60 : 60 cm



Artisan

Whirlpool's Artisan Cooking Ranges feature **premium burners**, **multifunctional ovens**, and **safety features**, making them the perfect kitchen partner. The stove and oven combination saves space and enables multitasking and flexibility while cooking.

## BUILT-IN HOB



### Safety Valve

The safety valve on the stove ensures a safe cooking environment by automatically shutting off gas supply when the flame is extinguished.



### Cast Iron Pan Support

The gas burners of Whirlpool cooktops feature cast iron pan supports, providing durability and heat resistance for cooking with heavy pans and cookware.



### Stainless Steel Cooktop

The stainless steel cooktop is durable, scratch-resistant, and capable of withstanding high heat, ensuring its longevity even with years of use.



### Tempered Glass

The tempered glass material enhances the aesthetic appeal of your kitchen while also making cleaning easier, making it perfect for modern and functional kitchens.



### AKC640C IX

#### 60 cm Built-in Hob 4 Gas Burners

- Cast Iron Pan Support
- Electric Ignition
- Safety Valve
- Mechanical Control
- Stainless Steel 304
- Dimension (w:d) 59 : 50 cm



### AKC631E IX

#### 60 cm Built-in Hob 3 Gas Burners + 1 Electric Hot Plate

- Enamel Pan Support
- Electric Ignition
- Safety Valve
- Mechanical Control
- Stainless Steel 304
- Dimension (w:d) 59 : 50 cm



### AKC640E IX

#### 60 cm Built-in Hob 4 Gas Burners

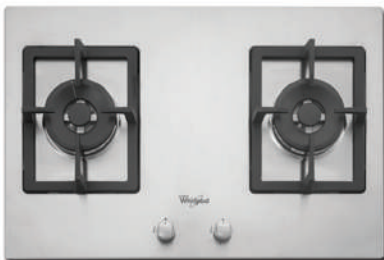
- Enamel Pan Support
- Electric Ignition
- Safety Valve
- Mechanical Control
- Stainless Steel 304
- Dimension (w:d) 59 : 50 cm



### AKC720C IX

#### 70 cm Built-in Hob 2 Gas Burners

- Cast Iron Pan Support
- Electric Ignition
- Safety Valve
- Mechanical Control
- Stainless Steel 304
- Dimension (w:d) 68 : 50 cm



### AKC7250C IX

#### 70 cm Built-in Hob 2 Gas Burners

- Cast Iron Pan Support
- Electric Ignition
- Safety Valve
- Mechanical Control
- Stainless Steel 304
- Dimension (w:d) 68 : 50 cm



### AKC721C IX

#### 70 cm Built-in Hob 2 Gas Burners + 1 Electric Hot Plate

- Cast Iron Pan Support
- Electric Ignition
- Safety Valve
- Mechanical Control
- Stainless Steel 304
- Dimension (w:d) 68 : 50 cm



### AKC720C BL

#### 70 cm Built-in Hob 2 Gas Burners

- Cast Iron Pan Support
- Electric Ignition
- Safety Valve
- Mechanical Control
- Black Tempered Glass
- Dimension (w:d) 68 : 50 cm



### AKC730C BL

#### 70 cm Built-in Hob 3 Gas Burners

- Cast Iron Pan Support
- Electric Ignition
- Safety Valve
- Mechanical Control
- Black Tempered Glass
- Dimension (w:d) 68 : 50 cm



## BUILT-IN HOB

### 2-IN-1 INDUCTION HOB (BUILT-IN OR TABLETOP)



**AKI732S / BLP**

70 cm  
2 Induction Zones  
Schott Ceran Glass



**ACH732 / BLP**

70 cm  
1 Induction Zone  
+ 1 Vitroceramic Zone

- Residual Heat Indicator
- 10-Level Temperature Control
- Sensor Touch Control
- Timer
- Child Lock Function
- Built-in or Tabletop Design
- Input Power: 2800W
- Color: Black Glass
- Dimension (w:d) 73.5 : 41.5 cm



**AKC930C BL**

90 cm Built-in Hob  
3 Gas Burners

- Cast Iron Pan Support
- Electric Ignition
- Safety Valve
- Mechanical Control
- Black Tempered Glass
- Dimension (w:d) 86 : 50 cm



**AKC950C IX**

90 cm Built-in Hob  
5 Gas Burners

- Cast Iron Pan Support
- Electric Ignition
- Safety Valve
- Mechanical Control
- Stainless Steel 304
- Dimension (w:d) 86 : 50 cm



**AKC921C IX**

90 cm Built-in Hob  
2 Gas Burners + 1 Ceramic Zone

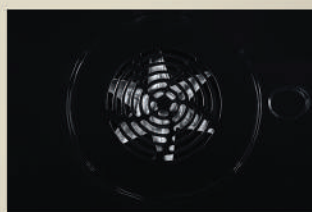
- Cast Iron Pan Support
- Electric Ignition
- Safety Valve
- Mechanical Control
- Stainless Steel 304
- Dimension (w:d) 86 : 50 cm

## BUILT-IN OVEN



### Convection Fan

The convection fan, coupled with an exhaust system, ensures even and quick cooking by circulating hot air inside the oven cavity, resulting in better recipe outcomes.



### Cooling Fan

The top of the oven features a vent that allows cool air to flow, preventing external components from overheating. This ensures the control panel and door remain safe to touch during oven use.

- 57 Liters Oven Capacity
- Rotisserie
- Cooking Timer
- Electric Oven
- Convection Oven
- Cooling Fan
- Triple Glass Door
- Black Enamel Cavity
- Stainless Steel
- 2560W



**AKZ861S IX**

60 cm Built-in Oven

- 8 Cooking Functions
- Digital Control



**AKZ661 IX**

60 cm Built-in Oven

- 5 Cooking Functions
- Mechanical Control

# RANGE HOOD

- 3-Speed Push Button Control
- Washable Aluminum Filter
- Active Carbon Filter
- Stainless Steel
- 2 x 40W Lamp



## Wide Variety of Range Hoods

Ensure a clean and odor-free cooking environment in your busy kitchen with Whirlpool's range hoods. Designed with premium materials and powerful extraction capacities, they effectively remove odors, smoke, grease, and other air pollutants to enhance air quality.



**AKR628 IX**  
60 cm Slim Hood

- Double Motor
- Suction Power: 450 m³/hr
- Input Power: 240W



**AKR851 IX**  
70 cm Flat Decorative Range Hood

- Single Motor
- Suction Power: 440 m³/hr
- Input Power: 210W



**AKR921 IX**  
90 cm Regular Range Hood

- Double Motor
- Suction Power: 480 m³/hr
- Input Power: 380W

*Also Available: 60 cm AKR621 IX*



**AKR912U IX**  
90 cm T-Box Range Hood

- Single Motor
- Suction Power: 820 m³/hr
- Input Power: 360W



**AKR914 IX**  
90 cm Glass Canopy Range Hood

- Single Motor
- Suction Power: 780 m³/hr
- Input Power: 360W

## MAIN SHOWROOMS, PARTS & SERVICE LOCATIONS

<b>MANILA</b>	Exatech Bldg., #56 Cordillera St. cor. E. Rodriguez Sr. Ave., Quezon City	(02) 8230-1555
<b>CEBU</b>	Exatech-Cebu Bldg., #60 Castilex Compound, Cabancalan, Mandaue City	(032) 345-3105
<b>DAVAO</b>	Exatech-Davao Bldg., Excellence St., Doña Luisa Subdivision, Phase II, Quimpo Blvd., Ecoland, Davao City	(082) 233-1068
<b>BACOLOD</b>	Exatech-Bacolod Bldg., Hilado Extension, Bacolod City	(034) 441-9912
<b>ILOILO</b>	Exatech-Iloilo Bldg., De La Rama Street, City Proper, Iloilo City	(033) 503-6834
<b>LEGAZPI</b>	Exatech-Legazpi Bldg., 831 B3 F. Aquende Drive, Brgy. 40 Cruzada, Legazpi City	(052) 742-2127
<b>PALAWAN</b>	Exatech-Palawan Bldg., Rizal Ave, Brgy. Magkakaibigan, Puerto Princesa, Palawan	(048) 433-5914
<b>ISABELA</b>	Exatech-Isabela Bldg., Maharlika Highway, Prenza, Cauayan City, Isabela	(078) 325-1052
<b>BAGUIO</b>	Exatech-Baguio Bldg., Corner Major Mane Road, Brgy. Greenwater, Loakan Dist., Baguio City	(074) 246-7532
<b>CDO</b>	Exatech-CDO Bldg., B16 L4 Pacific St., Pueblo de Oro, Upper Carmen, Cagayan De Oro City	0998 588-2099

Exclusively Distributed by:

**EXATECH**  
EXCELLENCE APPLIANCE TECHNOLOGIES

**OVER 500**  
SERVICE CENTERS  
NATIONWIDE

f Whirlpool Philippines @whirlpoolphilippines

**www.whirlpool.com.ph**

**JANUARY 2024**



In line with Exatech's policy of continuous improvement, specifications and features are subject to change without prior notice. Actual products may vary from photos shown.